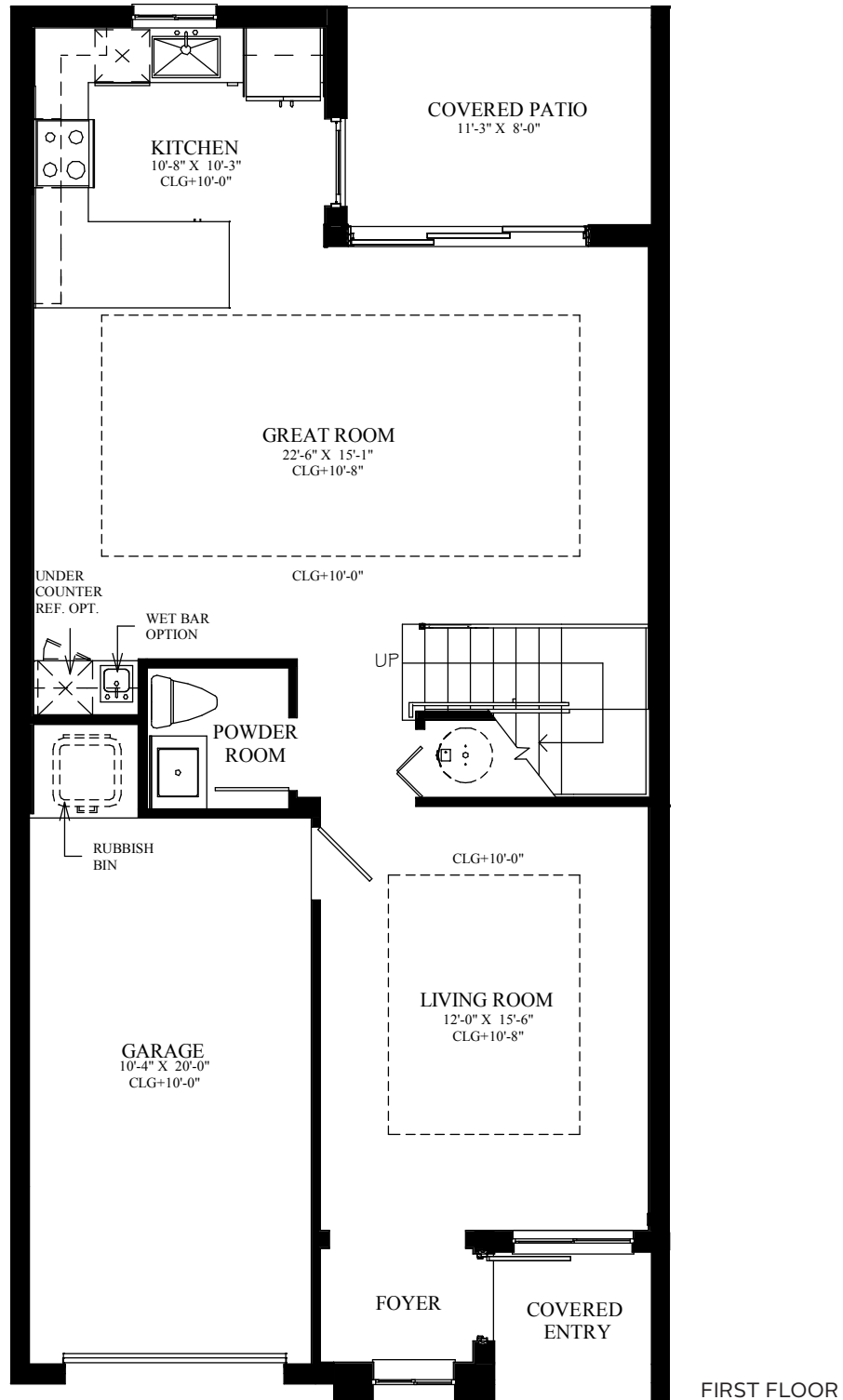
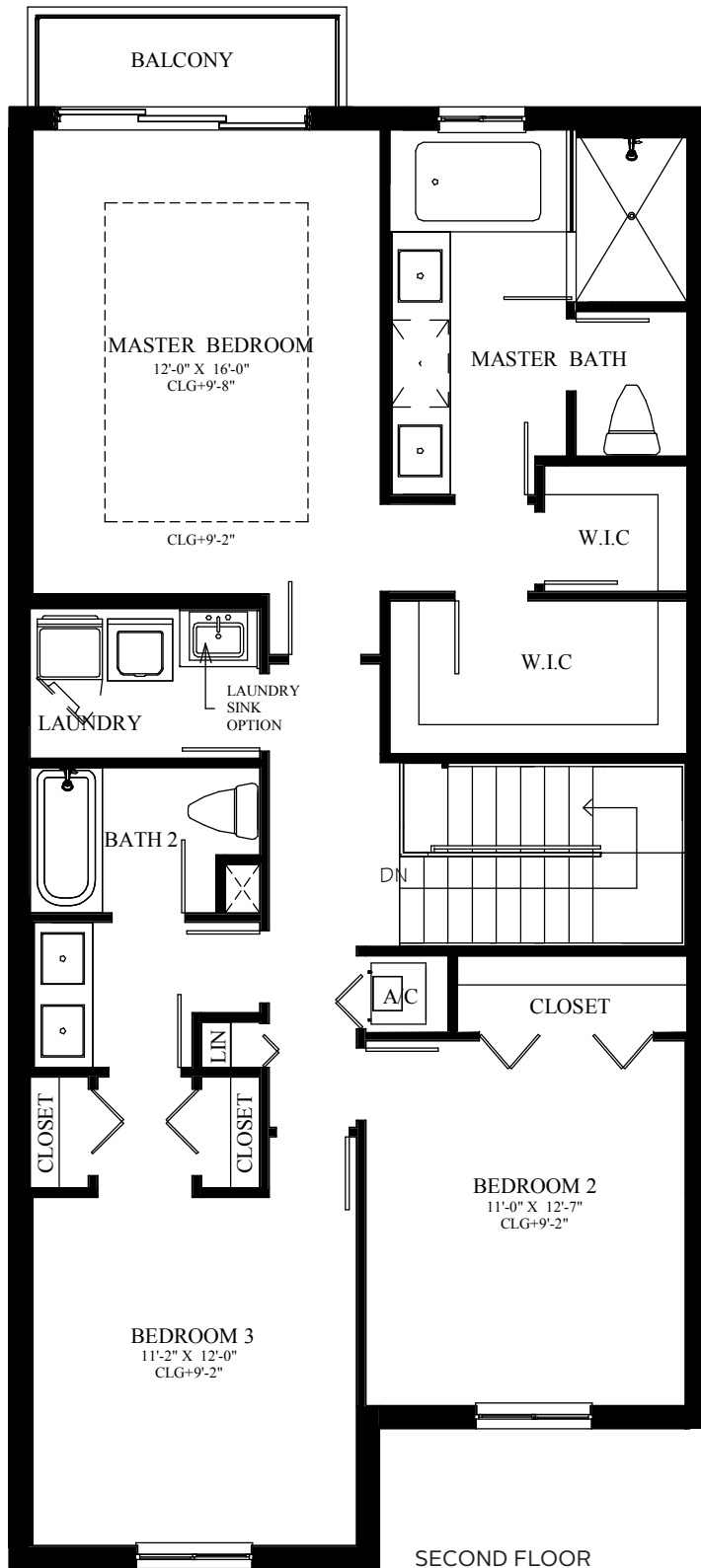


THE BLAKE

TWO-STORY 3 BEDROOMS, 2.5 BATHS, SOAKING TUB, FOYER, LIVING ROOM, GREAT ROOM, COVERED PATIO, BALCONY, 1-CAR GARAGE



FIRST FLOOR A/C 788 SF | SECOND FLOOR A/C 1,129 SF | TOTAL A/C 1,917 SF
 GARAGE 235 SF, COVERED PATIO 93 SF, BALCONY 39 SF
 COVERED ENTRY 33 SF, TOTAL 2,317 SF



ORAL REPRESENTATIONS CANNOT BE RELIED UPON AS CORRECTLY STATING THE REPRESENTATIONS OF THE DEVELOPER. FOR CORRECT REPRESENTATIONS, REFERENCE SHOULD BE MADE TO THE CONTRACT. DEVELOPER RESERVES THE RIGHT TO CHANGE OR WITHDRAW ANY OFFER AT ANY TIME. NOT AN OFFER WHERE PROHIBITED BY STATE STATUTES. IN OUR CONTINUING EFFORT TO IMPROVE OUR PRODUCT, LUXCOM RESERVES THE RIGHT TO REVISE COMMUNITY INFORMATION, PRICING, PLANS, SPECIFICATIONS, DIMENSIONS, MATERIALS, AND ELEVATIONS WITHOUT NOTICE TO, OR APPROVAL BY THE BUYER. THESE CONCEPTUAL DRAWINGS AND FEATURES ARE FOR THE CONVENIENCE OF REFERENCE, THEY SHOULD NOT BE RELIED UPON AS REPRESENTATION, EXPRESSED OR IMPLIED, OF THE FINAL DETAIL. LANDSCAPING DEPICTED NOT TO SCALE AND MAY VARY AS TO VEGETATION, MATURITY AND NUMBER. MEASUREMENTS ARE FROM BLOCK/STUD AT ITS FARTHEST POINT. PERSONS IN PHOTOS DO NOT REFLECT ANY PREFERENCE AND HOUSING IS OPEN TO ALL WITHOUT REGARD TO RACE, COLOR, RELIGION, SEX, HANDICAP, FAMILIAL STATUS OR NATIONAL ORIGIN. PLEASE CONSULT A LUXCOM SALES REPRESENTATIVE FOR ADDITIONAL INFORMATION. PRICES SUBJECT TO CHANGE WITHOUT NOTICE.

