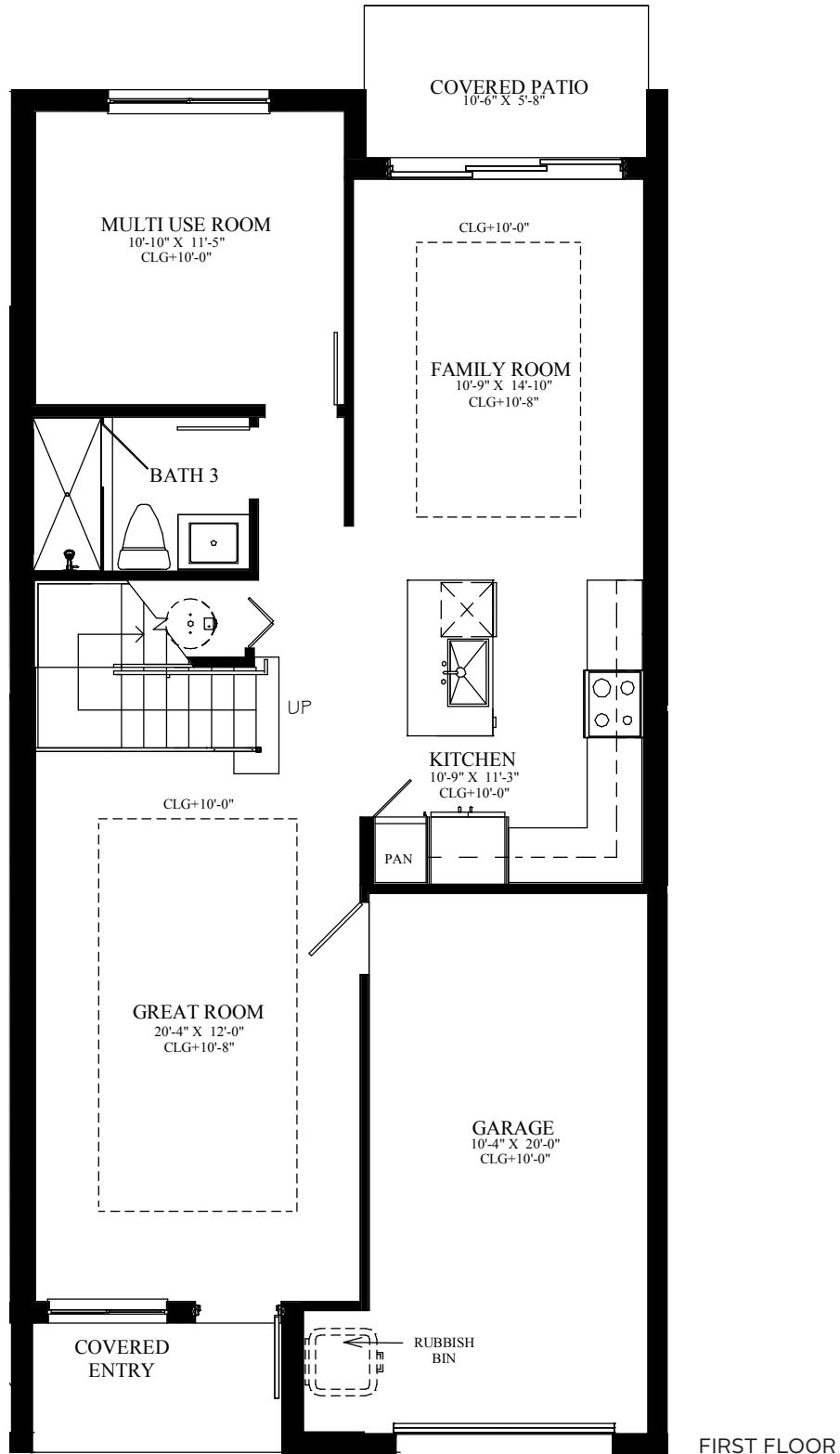
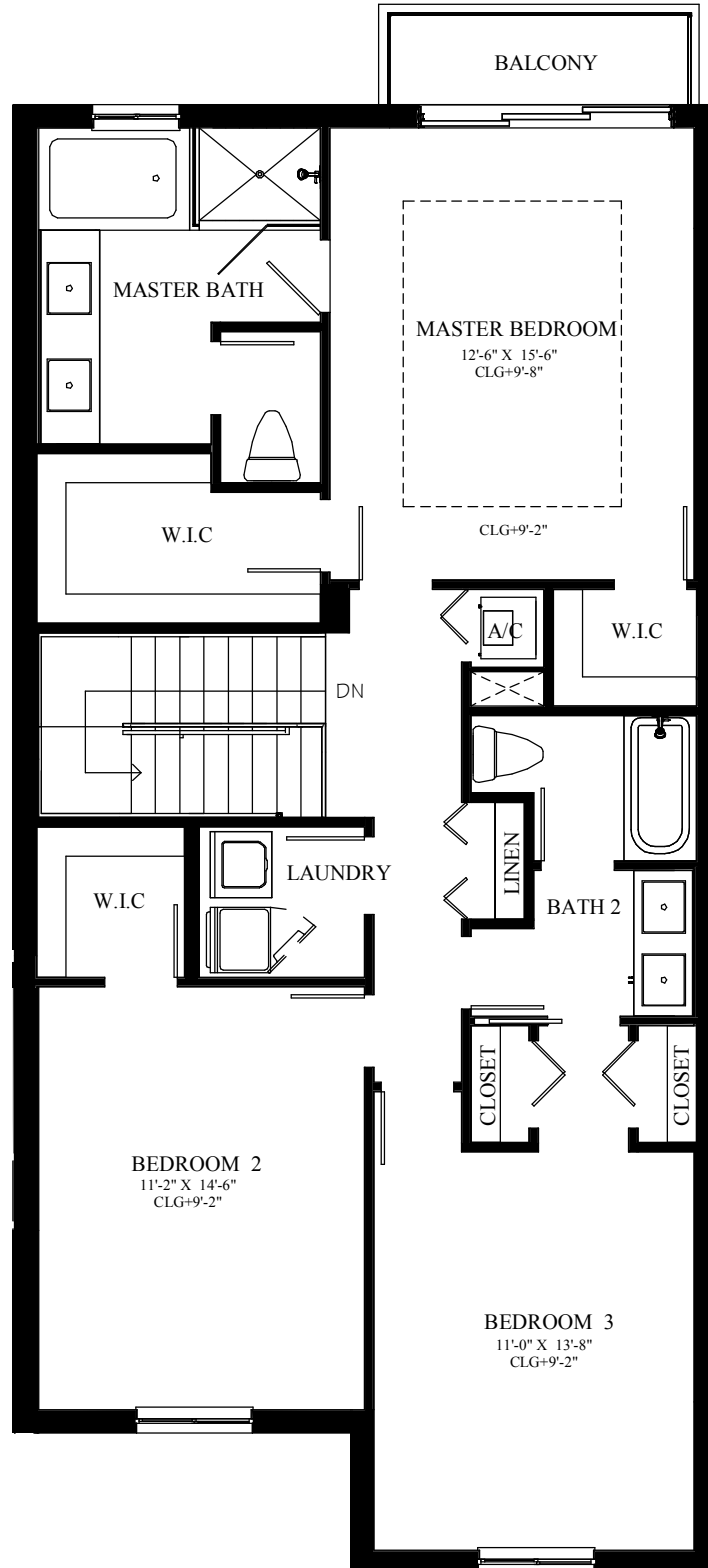


THE CHLOE

TWO-STORY 3 BEDROOMS, 3 BATHS, SOAKING TUB, GREAT ROOM, FAMILY ROOM, KITCHEN ISLAND, MULTI-PURPOSE ROOM, COVERED PATIO, BALCONY, 1-CAR GARAGE



FIRST FLOOR A/C 834 SF | SECOND FLOOR A/C 1,128 SF | TOTAL A/C 1,962 SF
 GARAGE 234 SF, COVERED PATIO 65 SF, BALCONY 38 SF
 COVERED ENTRY 50 SF, TOTAL 2,349 SF



SECOND FLOOR

ORAL REPRESENTATIONS CANNOT BE RELIED UPON AS CORRECTLY STATING THE REPRESENTATIONS OF THE DEVELOPER. FOR CORRECT REPRESENTATIONS, REFERENCE SHOULD BE MADE TO THE CONTRACT. DEVELOPER RESERVES THE RIGHT TO CHANGE OR WITHDRAW ANY OFFER AT ANY TIME. NOT AN OFFER WHERE PROHIBITED BY STATE STATUTES. IN OUR CONTINUING EFFORT TO IMPROVE OUR PRODUCT, LUXCOM RESERVES THE RIGHT TO REVISE COMMUNITY INFORMATION, PRICING, PLANS, SPECIFICATIONS, DIMENSIONS, MATERIALS, AND ELEVATIONS WITHOUT NOTICE TO, OR APPROVAL BY THE BUYER. THESE CONCEPTUAL DRAWINGS AND FEATURES ARE FOR THE CONVENIENCE OF REFERENCE, THEY SHOULD NOT BE RELIED UPON AS REPRESENTATION, EXPRESSED OR IMPLIED, OF THE FINAL DETAIL. LANDSCAPING DEPICTED NOT TO SCALE AND MAY VARY AS TO VEGETATION, MATURITY AND NUMBER. MEASUREMENTS ARE FROM BLOCK/STUD AT ITS FARTHEST POINT. PERSONS IN PHOTOS DO NOT REFLECT ANY PREFERENCE AND HOUSING IS OPEN TO ALL WITHOUT REGARD TO RACE, COLOR, RELIGION, SEX, HANDICAP, FAMILIAL STATUS OR NATIONAL ORIGIN. PLEASE CONSULT A LUXCOM SALES REPRESENTATIVE FOR ADDITIONAL INFORMATION. PRICES SUBJECT TO CHANGE WITHOUT NOTICE.

